

# Group Presentation Guide- Network and Security Option



# Requirements for the Network Design

# Network and Security Option Requirements

1. The **design** of the basic network to support the different departments and their customers.
2. Explain clearly why the network is required
3. Why Network security is needed?
4. The benefits for the organisation

# Points to Consider from the Case Study

- **Structure and Organization:**

- The Elite Group operates in a wide range of communication-related sectors
- EPS structure will be typical of a Printing company:
  - Purchasing and Supply Chain, Design, Production, Marketing and HRM, Financial Accounting and Reporting

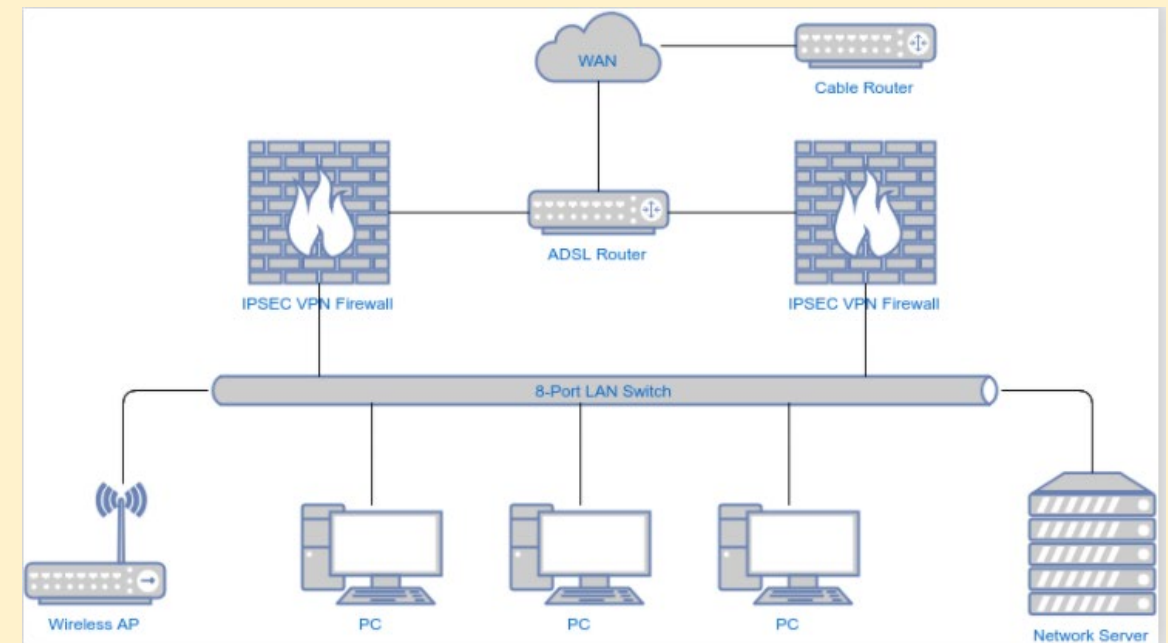
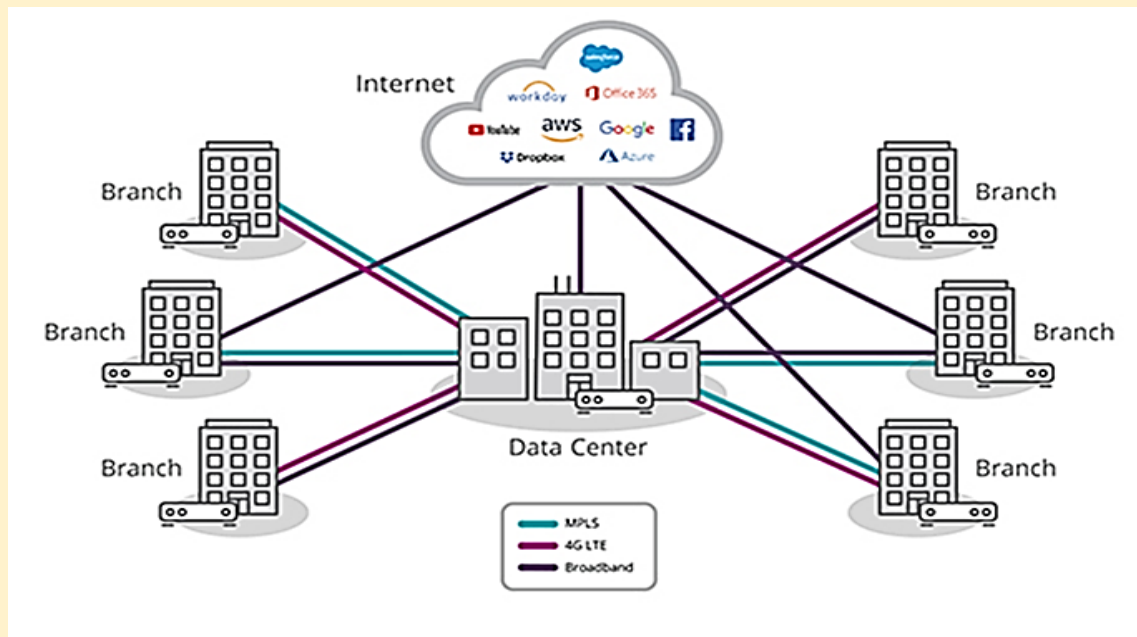
- **Type of Customers:**

- mainly creative publishers, supplying retailers

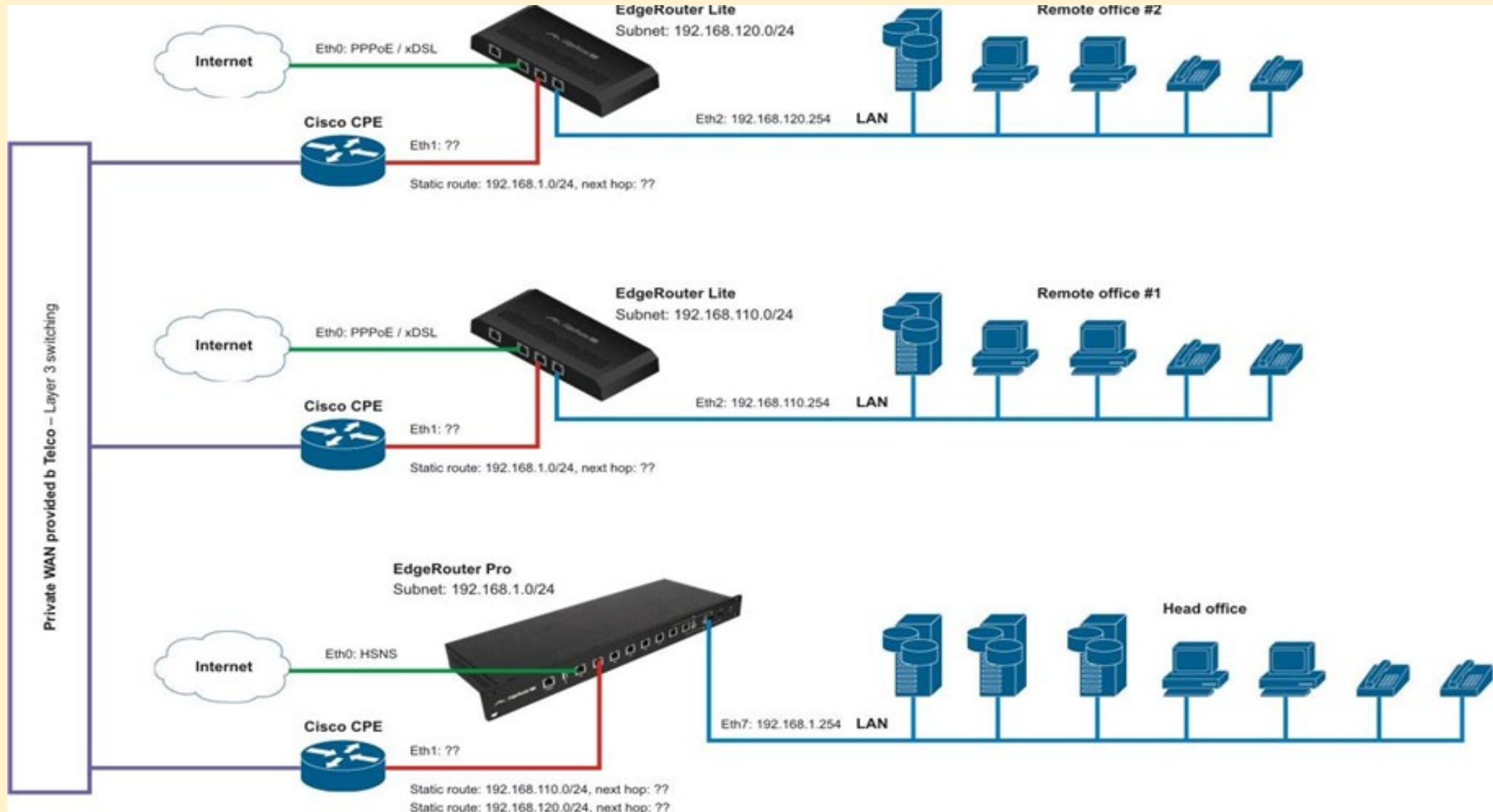
# So what do they need?- Enterprise Network

- **WAN-** to connect all companies of The Elite Group
- **Data Center at HQ with:**
  - Application Servers
  - Web Server
  - Storage Servers
  - Database Servers
  - WAN Router

- **LANs-** within EPS for:
  - Connecting each department
  - LAN Infrastructure to include:
    - Servers
    - Workstations
    - Switches
    - Routers
    - etc



# LAN's connected to the WAN





# Presentation Content and Structure



# Presentation Content and Structure

- **Title Slide**

- Module name
- Presentation Title e.g. Network Design and Security for EPS
- Group Name:
- Group Members: Student Number | First name | Last name
- Artwork

- **Introduction**

- Outline purpose of the presentation
- State what will be covered

- **Networking Basics**

- Define
- Types of networks- WAN, LAN
- Could include diagrams showing both, could be a generic

- **Benefits of using an Enterprise Network to The Elite Group**

- List and discuss 5-7 benefits
- <https://www.cisco.com/c/en/us/solutions/enterprise-networks/what-is-an-enterprise-network.html#~faq5>

- **Requirements Analysis for EPS Enterprise Network**

- List and discuss the key considerations
- Example: to connect EPS to The Elite Group of companies , to provide access to all applications, to facilitate data exchange and file sharing among, connectivity between departments, etc.

- **Architecture and Topology**

- Discuss the use of a Client/Server architecture- multi-tiered
  - Include diagram of an example, could be a generic
- Discuss the use of a Star Topology for LAN
  - Include diagram of an example, could be a generic
- Discuss the use of an Enterprise Networking Architecture, which includes:
  - WAN, LAN's and Data Center for EPS

- **Design of EPS's Enterprise Network**

- State that a WAN is need to connect all companies in The Elite Group

- Include a diagram showing the design of a WAN

- State that LAN's will be implemented at EPS

- Include a diagram showing the typical LAN design for EPS

Note: The LAN diagram should be specific to EPS, i.e. should be drawn, not downloaded from the web.

- **IT Infrastructure and Components**

- State the hardware and software needed for the WAN and LAN

- Example: Application Servers, Web Servers, File/Storage server, Workstations, Switches, Routers, Cables, etc.

- **Network Security**

- List the measures that will be implemented to secure the network against threats

- Example: firewalls, IPS, Anti-Virus, Access Control, Wireless Security, Web Security

- **Conclusion**

- Give an appropriate summary